

# Waterford Historical Society Newsbill

Volume 19, Number 4

Dec 2014-Jan/Feb 2015

Editor Becky Morgan 248-673-2689  
rmorgan56301@comcast.net

## Calendar

**Saturday, December 6**  
**Christmas Sale**  
**10:00 -4:00**  
(see article inside newsletter)

**December 10**  
Board Meeting 1:00  
In the Hatchery House

**December 11 at Noon**  
**Holiday**  
**Pot Luck Luncheon**  
(see article inside newsletter)

**Historical Society**  
**Closed for the Season**  
**After Dec. 10th, 2014**

**January 2015**  
WHS Closed

**February 2015**  
WHS Closed

**WHS Reopens the first**  
**Wednesday in March**  
**Weather Permitting**

**If Waterford Schools**  
**are closed**  
**we are closed**

## President's Notes

The crisp air and the snowflakes of Halloween let us know Christmas is near. Of course, at the Historical Society we already had Christmas...Christmas in October! And what a great success it was! Thank you to each and every one of you who crafted and baked and shopped. We continue to be open for shopping on Wednesdays during our regular hours and then on December 6<sup>th</sup> from 10-4. So, no excuse to find your holiday gifts for everyone on your list.

We have made some changes to our schedule for 2015. The Hatchery House and Log Cabin will be closed after December 10, 2014, and open again on March 4, 2015. The Village will open for the season on May 6, 2015. Last year's weather had us in a tailspin and it is just too unsafe to be on our parking lot during the winter. And remember, even for March, when the Waterford School District is closed, we are closed.

So, rest and enjoy friends and family this holiday season. But, also remember those who may need you during this time.

*"Be at war with your vices, at peace with your neighbors, and let every new year find you a better man."* -- Benjamin Franklin

A peaceful Holiday season to you,

*Sally Strait*



## Village Schedule



The Hatchery House, Log Cabin, Research Library & offices will be closed after December 10th through February 2015 and opens again the first Wednesday in March 2015, weather permitting.

The Village re-opens the first Wednesday in May.

## Board Members

### President

Sally Strait 248-683-2697  
sstrait649@comcast.net

### Vice President

Bob Allen 248-623-0463

### Recording Secretary

Becky Morgan 248-673-2689

### Corresponding Secretary

Betty Seymour 248-666-4265

### Treasurer

Betty Horn 248-673-9708

### Bookkeeper

Cheryl Stoutenburg 248-623-0414

### Members At Large

Grace Rockey 248-666-3673  
Norman Watchpocket 248-673-5310  
Dorothy Webber 248-666-4907

### Vice President Emeritus

Dorothy White

## Reminder...

Annual Memberships expire December 15, 2014. Renew now to keep your membership and newsletter subscription current.





## Christmas Sale

Our Christmas Sale will take place on Saturday, December 6th from 10 am - 4 pm. The sale will take place in Jacober's General Store and the Log Cabin.

**This sale is a fundraiser and all proceeds go to the Waterford Historical Society.**

Shoppers will find:

- |                             |                    |
|-----------------------------|--------------------|
| -local handmade items       | -gift baskets      |
| -unique holiday items       | -gift mugs         |
| -holiday decorations        | -pet items         |
| -jams, honey, salsa, soups  | -aprons            |
| -WHS sweatshirts & T-shirts | -candles, soaps    |
| -historic children's toys   | -historic maps     |
| -homemade cookies           | -children's items  |
| -Michigan items             | -stocking stuffers |
| -handmade greeting cards    | -WHS afghan        |

Hope to see many of you there. Be sure to tell your friends and neighbors! It is a great place to finish up your holiday shopping and find those last minute unique items for those hard to shop for persons on your list.

## Cookies WANTED

- ◆ We need cookies baked for our popular **Cookie Sale** during our Christmas Sale. These cookies are big sellers!!!
- ◆ Bake and put four cookies in a baggie. Bring them to the Log Cabin on Sat., Dec. 6th



These are quick and our customers love them! Thank you to all who bake!



## Fashion Show Alert

**Save the date:  
Saturday, March 28th**

**Tickets are \$30.00 per person  
(Lunch is included in the price)**

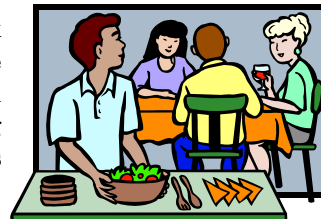
**Keep this date open and spread the word!**

**This event is a Fundraiser for the WHS.**

**Fashions presented by - The Clothing Cove**

## Join us for the Holiday Pot Luck Luncheon Thursday, December 11th at noon Christ Lutheran Church 5987 Williams Lake Road

The Holiday Pot Luck Luncheon is one of the Waterford Historical Society's ways of saying thank you to all our members for everything they do.



Please join us if you can. This is one of the times we can all get together and just enjoy each other's company.

- ◆ **The Waterford Historical Society provides the meat, beverages and place settings.**
- ◆ **Bring a friend or neighbor interested in learning more about the historical society. All are welcome.**
- ◆ **Everyone is asked to bring a dish to pass.**

People attending the luncheon in the past have loved the variety of dishes provided by our members and look forward to the special dishes that are shared.

Hoping to seeing a big crowd at our holiday gathering!

## Waterford Goodfellows

The Waterford Historical Society will once again be donating items for the Waterford Goodfellows Holiday Food Basket Program. Holiday baskets contain the fixings for a holiday dinner, canned goods, candy and a toy for each child ages birth through 12 years old.



The Historical Society will be collecting:

-canned goods	-mittens
-coloring books	-crayons
-new children's books	
-non-perishable food items	
-games & toys for all age groups.	

In times of emergencies the Goodfellows also provide other assistance to Waterford residents, so monetary donations are also welcome.

Items may be dropped off at the Hatchery House on Wed. December 3rd or Wed. December 10th during regular hours or at Christ Lutheran Church on December 11th at our holiday luncheon.

## Winter Holidays Around the World

With human history going back five thousand years, perhaps even more, it has resulted in the winter holiday season being garbed with rich traditions, with many layers of folklore, customs and celebration. Many of them are linked to the winter solstice in some way, especially in the northern hemisphere. That is because on that day the daytime hours are at their shortest in the northern hemisphere, and the nighttime hours are at their longest. Here are some of the winter holidays that are celebrated around the world. (Source [www.buzzle.com/wikipedia.org](http://www.buzzle.com/wikipedia.org))

### Diwali



Diwali is also known as *the festival of light*. It is celebrated at the start of winter in India, Nepal, Malaysia, Singapore, Sri Lanka, Myanmar, Mauritius, Guyana, Trinidad, Tobago, Suriname & Fiji. It is one of the most important festivals of the Hindus. Before the festival 'spring' cleaning takes place to welcome the Goddess of Wealth, Goddess Lakshmi. Oil lamps are lit to win over evil. Bursting of crackers helps drive evil spirits away.

### Christmas



Christians all over the world celebrate the birth of Jesus on December 25th. Preparations begin before the actual day by cleaning the house and decorating it. Lights are hung on houses and Christmas trees. Many people go to church, decorate a Christmas tree, give each other gifts and have a special dinner together. There is a belief in almost all parts of the world of Santa coming on a sled or sleigh to deliver gifts.

### Hanukkah



Hanukkah the 'Festival of Lights' is a Jewish holiday to remember the rededication of the Holy Temple in ancient Jerusalem. The menorah that was supposed to burn all night every night had only one night's supply of kosher oil yet shone for 8 days until more oil arrived. The festival is observed with a menorah. One more candle is lighted each night of the holiday, until all eight are lit on the final night.

### Kwanzaa



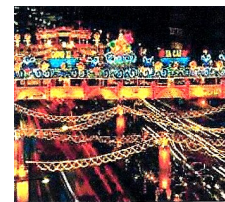
Literally meaning 'First Fruits', Kwanzaa is based on an ancient harvest festival of Africa. It celebrates ideals like collective responsibility & work; self-determination; co-operation; purpose; creativity; faith; and unity. It is a week-long celebration from December 26 to January 1. It culminates in a feast and gift-giving. People decorate their homes with vegetables & fruits, put on special clothes, and light the 'kinara' which is a special candle-holder.

### Las Posadas



This is a traditional winter holiday celebrated in Mexico, Guatemala & parts of the South-eastern United States between December 16 and December 24. Posadas is Spanish for 'lodging'. It is a re-enactment of Joseph searching for a room at the inn. The head of the procession will have a candle inside a paper lampshade. At the end of each night's journey, carols will be sung, children break open star-shaped piñatas and there will be a feast.

### Lunar New Year



This is a two-week winter holiday celebrated during the first lunar moon by the Vietnamese, Koreans, & Chinese. In China it is called the *Spring Festival*. It marks the end of the winter season. It starts on the 1st day of the Chinese New Year and ends after the 15th day, when the Lantern Festival is celebrated. It is a family oriented celebration. People visit friends & family, worship ancestors, wear their best clothes and exchange gifts and food.

## Breaking Ground for the Schoolhouse

Wow! Work on the Schoolhouse has begun. We are continuing our vision for the Village by adding a turn-of-the-century one room schoolhouse. Thanks to our many generous supporters we are realizing this dream.

Anyone wishing to help fund the schoolhouse may send a check in the amount of their choice to: Waterford Historical Society, PO Box 300491, Waterford MI 48330-0491. Write 'Schoolhouse' on the memo line.

Another way to donate is the special 'Sponsor a Plaque' program. For \$200.00 supporters may honor an educator and help build the schoolhouse at the same time. A plaque with the educator's name will be displayed in the schoolhouse.

Together we are doing great things!

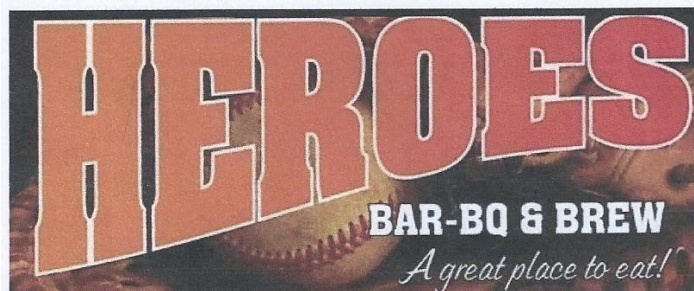
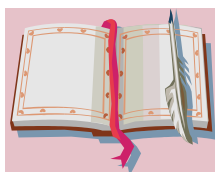
waterfordhistoricalsociety.org  
a non-profit 501(c)3 organization  
(donation forms can be found in this newsletter)



## Who Visited Us This Year?

According to the guest register in the Hatchery House we had visitors from the following places in 2014:

- |                  |                             |                  |
|------------------|-----------------------------|------------------|
| Beaufort SC      | Metamora                    | Sterling Heights |
| Bloomfield Hills | Milford                     | Troy             |
| Clarkston        | Onion Creek WA              | Walled Lake      |
| Commerce Twp     | Oxford                      | Waterford        |
| Garden City      | Pontiac                     | White Lake       |
| Howell           | Reynoldsbury OH             | Windsor, Canada  |
| Keego Harbor     | Rochester Hills             |                  |
| Lake Orion       | Romulus                     |                  |
| Lansing IL       | Saginaw                     |                  |
| Livonia          | Sarasota FL                 |                  |
| Mansfield OH     | Shelby Township             |                  |
| Marysville       | Shingle Springs, California |                  |
| Medford OR       |                             |                  |



## Thank You ! Thank You !

A big thank you to Heroes and those who helped the Waterford Historical Society by participating in our fundraiser. Heroes gave 20% of all the bills of those presenting the special coupon on the designated days to the Historical Society. A lot of fun and good food was had by everyone. Thank you all for your generosity!!!



### Community Share

We really appreciate all of you who participate in community savings programs by shopping at Kroger and Tenuta's. This is free money for us.

Thank you so much for your help! **Thank you to Kroger & Tenutas for their generosity! Please support them by shopping at these stores.**

Tenuta's shoppers please continue to bring receipts to the Hatchery House on Wednesday or mail them to us at the address below. Kroger shoppers keep using your store card.



at the address below. Kroger shoppers keep using your store card.

### WHS Wants to Thank Our Christmas in October Helpers!

- ◆ Thank you to everyone who sorted, marked, priced, donated, baked, sewed, knitted, crocheted, crafted, set up or worked a shift to make our Christmas in October fundraiser sale a big success!



We are very grateful to all who helped!

I've learned that people will forget what you said, people will forget what you did, but people will never forget how you made them feel.



Maya Angelou

#### Can you help?



### Annual Giving

We are including our Annual Giving form with this newsletter instead of sending out an additional mailing.

Our annual giving is a yearly plea for help with the day to day expenses like electricity, gas and insurance.

All our funding comes solely from donations by generous people interested in preserving the history of Waterford.

It might be a member who cannot volunteer on Wednesdays or at our special events. Or maybe a lifetime member who might be able to give a little more. This is a chance to help out. Donations are just as important as volunteering!!!

We thank everyone for helping us continue to be an organization of which we all can be proud.

### Renew Your Membership... Or Become a Member of the Waterford Historical Society

Would you or someone you know like to renew their membership or become a member of the Waterford Historical Society?

All memberships coming in now will be good until December of 2015. We have much going on and don't want anyone to miss out!

Clip and fill out the form below and bring it in on a Wednesday or mail it to :



Come join us!

Waterford Historical Society  
P.O. Box 300491  
Waterford MI 48330-0491

#### Waterford Township Historical Society Membership Application

		<input type="checkbox"/>	\$15.00	Individual
		<input type="checkbox"/>	\$25.00	Family
		<input type="checkbox"/>	\$100.00	Patron
		<input type="checkbox"/>	\$50.00	Organizations/Businesses
		<input type="checkbox"/>	\$150.00	Lifetime per family
		<input type="checkbox"/>	\$100.00	Lifetime per person
		<input type="checkbox"/>	\$125.00	Lifetime per couple
		<input type="checkbox"/>	\$250.00	Lifetime Org./Businesses
		<input type="checkbox"/>	\$500.00	Lifetime Patron

_____	_____
Date	Phone
_____	_____
Name	
_____	
Address	
_____	
City, State, Zip	Mail payment to: Waterford Historical Society
Make Check Payable To: Waterford Township Historical Society	P.O. Box 300491 Waterford, MI 48330-0491

## Waterford Historical Society

We are open every Wednesday from 10:30 a.m. until 2:00 p.m. **We close for the season after Dec. 10 and re-open the first Wednesday in March.**

We are located in Fish Hatchery Park at:  
4490 Hatchery Rd  
Waterford, MI 48329

Our Mailing Address is:  
P.O. Box 300491  
Waterford, MI 48330-0491

Contact us at:  
Sally Strait 248-683-2697

[www.waterfordhistoricalsociety.org](http://www.waterfordhistoricalsociety.org)  
Non-profit 501(c)3 organization

## Thanks Newsletter Sponsors!



This edition of the newsletter is brought to you in part by Stu & Arlen Magy. Thank you so much!

Like to help sponsor a newsletter?  
Send a check for \$25 to WHS at our address:  
PO Box 300491, Waterford MI 48330-0491.  
Write 'Newsletter' on the memo line.

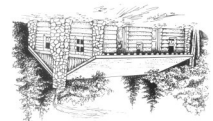
## Upcoming Local Events:

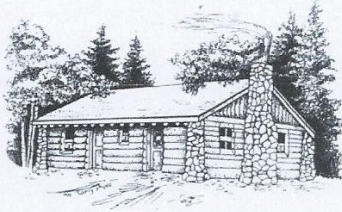
- ◆ **Tree Lighting & Santa Celebration:** Tues, Dec 2nd  
6-8 pm Waterford Township Hall
- ◆ **Christmas Sale:** Saturday, Dec 6th  
from 10 am-4 pm at Fish Hatchery Park  
[www.waterfordhistoricalsociety.org](http://www.waterfordhistoricalsociety.org)
- ◆ **WHS Holiday Pot Luck Luncheon:**  
Thursday, Dec 11th  
noon at Christ Lutheran Church  
(see article in this newsletter)
- ◆ **Kettering Holiday Collage Concert :**  
December 11-13, 7 pm  
Kettering Performing Arts Center  
[www.waterford.k12.mi.us/pac/](http://www.waterford.k12.mi.us/pac/) (248-673-4205)
- ◆ **New Horizons Band Holiday Concert:**  
Sunday, December 14th, 2 pm  
Mott Performing Arts Center  
[www.waterford.k12.mi.us/pac/](http://www.waterford.k12.mi.us/pac/) (248-673-4205)
- ◆ **Mott Holiday Showcase :**  
December 17-18, 7 pm  
Mott Performing Arts Center  
[www.waterford.k12.mi.us/pac/](http://www.waterford.k12.mi.us/pac/) (248-673-4205)

Our Mission Statement:  
Collecting, protecting and preserving the history of  
Waterford Township for the interest and education  
of present and future generations.

Waterford Township Historical Society

P.O. Box 300491  
Waterford, Michigan  
48330-0491





# Waterford Historical Society

## Annual Giving 2014

The Annual Giving is the way in which members and friends of the Waterford Township Historical Society go the extra mile for HISTORY. Your generous donation enables us to continue our preservation, growth, and research of history for Waterford Township residents.

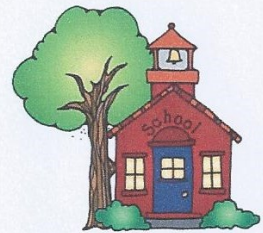
Name \_\_\_\_\_  
Address \_\_\_\_\_  
City, State, Zip \_\_\_\_\_

Please make checks payable to and mail to: \_\_\_\_\_ \$250  
Waterford Historical Society \_\_\_\_\_ \$100  
P.O. Box 300491 \_\_\_\_\_ \$50  
Waterford, MI 48330-0491 \_\_\_\_\_ \$25  
\_\_\_\_\_ other

---

### WHS Schoolhouse Building Fund

Donation amount of your choice: \_\_\_\_\_  
Donor Name \_\_\_\_\_  
Address \_\_\_\_\_  
City, State, Zip \_\_\_\_\_



### Special 'Sponsor a Plaque' Program (\$200.00)

**Honor an educator with a plaque to be displayed in the schoolhouse.**

Name of Teacher/Educator: \_\_\_\_\_  
School Name/District \_\_\_\_\_  
Donor Name \_\_\_\_\_  
Address \_\_\_\_\_  
City, State, Zip \_\_\_\_\_

Please make checks payable to Waterford Historical Society

Mail with this form to: Waterford Historical Society P.O. Box 300491 Waterford, MI 48330-0491

Call 248-683-2697 for more information

# WHS 2015 Schedule

## EVENT DATES

**Are Subject to Change  
Please Check Newsletter**

The Hatchery House, research library, offices and our Log Cabin store are open on scheduled Wednesdays from 10:30 a.m.—2:00 p.m.

Waterford Historic Village will close for the season to tours after September 30, 2015, and will re-open on May 4, 2016.

## January

Closed

## February

Closed

## March

- 4 Hatchery House  
& Log Cabin Open
- 4 Newsletter Mailing
- 11 Log Cabin Days Mtg.
- 18 Board Meeting 1:00
- 28 ***Fashion Show 11:00 a.m.***

## April

- 1 Log Cabin Days Mtg 1:00
- 15 Board Meeting 2:15

## May

- 6 Historic Village opens
- 6 Log Cabin Days Mtg 1:00
- 20 Board Meeting 2:15
- 21 ***Annual Membership Meeting  
and Election 7:00 p.m.***
- 25 Memorial Day Parade

## June

- 3 Log Cabin Days Mtg 1:00
- 3 Newsletter Mailing
- 17 Board Meeting 2:15
- 26 Log Cabin Workday 10:00
- 27 ***Log Cabin Days 10-5***
- 28 ***Log Cabin Days 10-5***

## July

- 1 Log Cabin Days Mtg 1:00
- 15 Board Meeting 2:15

## August

- 19 Board Meeting 2:15
- 26 Christmas Oct. Mtg 10:30

## September

- 2 Newsletter Mailing
- 16 Board Meeting 2:15
- 30 Village Closes for Season  
after this Wednesday

## October

- 14 Board Meeting 1:00
- 16 ***Christmas in October 10-4***
- 17 ***Christmas in October 10-4***

## November

- 18 Board Meeting 1:00
- 25 No Workday

## December

- 2 Newsletter Mailing
- 5 ***Christmas Sale 10-4***
- 9 Board Meeting 1:00
- 10 Christmas Lunch  
Noon  
Christ Lutheran Church

Dec 16-Feb 24, 2016 Closed

## March 2, 2016

- 2 First Wednesday Open
- 16 Board Meeting 1:00
- 26 Fashion Show